

# NASA-MSU Professional Enhancement Awards Program

- Sponsored by NASA Land Use and Land Cover Change Program and Michigan State University
- Supports students to attend annual meetings of US-IALE (US Regional Association, International Association for Landscape Ecology)
- Started in 1998 (approximately 20 students/year)
- >270 students from >100 institutions around the world



# NASA-MSU Professional Enhancement Awards Program

- Special dinner gathering with leading scientists
- Many former awardees are now leaders and active in land use and land cover change research
- Collaborations among awardees (e.g., books, articles, research projects)
- Next class: April 3-7, 2011 (Portland, Oregon)
- <http://www.csis.msu.edu/NASA-MSU.htm>

# USDA-NIFA Professional Enhancement Awards Program

- Started in 2010
- 10 Students at the 2010 US-IALE meeting



# CHANS Fellows Program

- Opportunities for junior scholars interested in CHANS to attend relevant meetings, symposia, and workshops.
- **CHANS Fellows**
  - 14 at the 2009 US-IALE meeting
  - 10 at the 2010 US-IALE meeting
  - 10 at the 2010 AAG meeting
  - 10 at the 2011 AAAS Meeting  
(February 17-21, Washington DC)



# **International Network of Research on Coupled Human and Natural Systems (CHANS-Net)**

## **Objectives:**

- Promote communication and collaboration across the CHANS community.**
- Generate and disseminate synthesis scholarship on CHANS.**
- Expand the CHANS community.**

# Activities

- Symposia
- Workshops
- Synthesis papers
- Special issues
- Book series
- Web-based sources ([www.chans-net.org](http://www.chans-net.org))

The screenshot shows the CHANS-Net website homepage. At the top, there is a banner image of a river with a bridge, and the text "CHANS-Net International Network of Research on Coupled Human and Natural Systems". Below the banner are four icons: "News & Events" (a newspaper), "Opportunities" (a green checkmark), "Discussion Forum" (a group of people), and "Join CHANS-Net" (a globe). A search bar is located to the right of these icons. The main content area is divided into three columns. The left column contains a navigation menu with links: Home, About Us, Projects, People, Publications, and Links. Below the menu is contact information for the Center for Systems Integration and Sustainability at Michigan State University. The middle column features a "Welcome to CHANS-Net" heading followed by a paragraph describing the organization's mission and goals. The right column contains a "quick links" section with links to project locations, recent discussions, and events, as well as a "stay in touch" section with RSS and email subscription options, and a "sponsor" section mentioning NSF support.

**CHANS-Net**  
International Network of Research on  
Coupled Human and Natural Systems

News & Events Opportunities Discussion Forum Join CHANS-Net

Search

**Home**  
About Us  
Projects  
People  
Publications  
Links

Center for Systems  
Integration and  
Sustainability  
115 Manly Miles Building  
Michigan State University  
East Lansing, MI 48824, USA  
T: 517-432-5025

**Welcome to CHANS-Net**

**Coupled human and natural systems** (CHANS) are integrated systems in which humans and natural components interact. CHANS research has recently emerged as an exciting and integrative field of cross-disciplinary scientific inquiry, with research projects covering a variety of coupled systems in locations spanning the globe. Although individual projects have generated many important insights, it is essential to systematically transform the field to be more than the sum of its parts and provide broader insights of greater scientific and societal significance than those resulting from individual projects alone. The goal of CHANS-Net is to foster this transformation by facilitating communication and collaboration among members of the CHANS research community. [More...](#)

quick links  
[project locations](#)  
[recent discussions](#)  
**events**  
[events](#)  
stay in touch  
[RSS 2.0](#)  
[email](#)  
**sponsor**  
CHANS-Net is supported  
by the NSF Dynamics of  
Coupled Natural and



# **Example Activities of CHANS-Net**



# CHANS Workshops

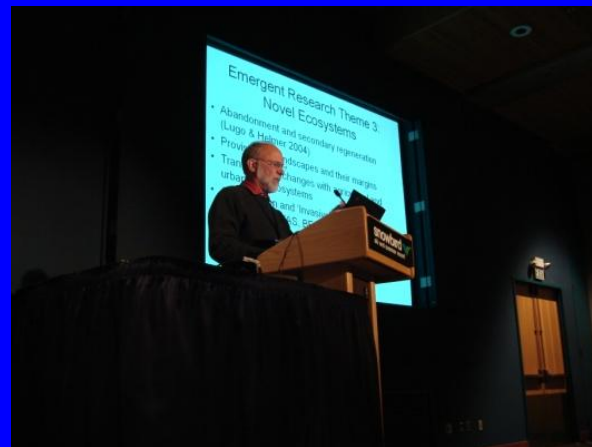
- **First Workshop**
  - “Challenges and Opportunities in Research on Complexity of Coupled Human and Natural Systems”
  - at the 2009 conference of US-IALE



# CHANS Symposia

- US-IALE Conference (2009)

“ Complexity in Human-Nature Interactions across Landscapes”



# Events at the Annual Meeting of the Association of American Geographers



- Synthesis across Projects
- April 14-16, 2010
- [http://www.chans-net.org/CHANS-Net\\_Events\\_at\\_AAG.aspx](http://www.chans-net.org/CHANS-Net_Events_at_AAG.aspx)

# Symposium at NSF

- Frontiers in CHANS Research: Current Progress and Future Opportunities

- April 15, 2010



- [http://www.nsf.gov/news/news\\_summ.jsp?cntn\\_id=116687](http://www.nsf.gov/news/news_summ.jsp?cntn_id=116687)
- <http://special.news.msu.edu/chans/>



# Web-based Resource Center (www.CHANS-Net.org)



## CHANS-Net

International Network of Research on  
Coupled Human and Natural Systems



News & Events



Opportunities



Discussion Forum



Join CHANS-Net

Search

Home

About Us

Projects

People

Publications

Links

Center for Systems  
Integration and  
Sustainability

115 Manly Miles Building  
Michigan State University  
East Lansing, MI 48824, USA  
T: 517-432-5025

## Welcome to CHANS-Net

**Coupled human and natural systems** (CHANS) are integrated systems in which humans and natural components interact. CHANS research has recently emerged as an exciting and integrative field of cross-disciplinary scientific inquiry, with research projects covering a variety of coupled systems in locations spanning the globe. Although individual projects have generated many important insights, it is essential to systematically transform the field to be more than the sum of its parts and provide broader insights of greater scientific and societal significance than those resulting from individual projects alone. The goal of CHANS-Net is to foster this transformation by facilitating communication and collaboration among members of the CHANS research community. [More...](#)

quick links

[project locations](#)

[recent discussions](#)

[events](#)

[events](#)

stay in touch

 RSS 2.0

[email](#)

sponsor

CHANS-Net is supported  
by the NSF Dynamics of  
Coupled Natural and

# (www.CHANS-Net.org)



## CHANS-Net

International Network of Research on  
Coupled Human and Natural Systems



News & Events



Opportunities



Discussion Forum



Join CHANS-Net

Search

Home

About Us

Projects

People

Publications

Links

Center for Systems  
Integration and  
Sustainability

115 Manly Miles Building  
Michigan State University  
East Lansing, MI 48824, USA  
T: 517-432-5025

## Welcome to CHANS-Net

**Coupled human and natural systems** (CHANS) are integrated systems in which humans and natural components interact. CHANS research has recently emerged as an exciting and integrative field of cross-disciplinary scientific inquiry, with research projects covering a variety of coupled systems in locations spanning the globe. Although individual projects have generated many important insights, it is essential to systematically transform the field to be more than the sum of its parts and provide broader insights of greater scientific and societal significance than those resulting from individual projects alone. The goal of CHANS-Net is to foster this transformation by facilitating communication and collaboration among members of the CHANS research community. [More...](#)

quick links

[project locations](#)

[recent discussions](#)

[events](#)

[events](#)

stay in touch

 RSS 2.0

[email](#)

sponsor

CHANS-Net is supported  
by the NSF Dynamics of  
Coupled Natural and

# CHANS Fellows Program

- Started in 2009 (junior faculty/researchers, postdoc, students)
- 34 fellows in 2009 and 2010





# NASA-MSU Professional Enhancement Awards Program

- Sponsored by NASA Land Use and Land Cover Change Program and Michigan State University
- Supports students to attend annual meetings of US-IALE (US Regional Association, International Association for Landscape Ecology)
- Started in 1998 (approximately 20 students/year)
- >270 students from >100 institutions around the world
- Special dinner gathering with leading scientists
- Many former awardees are now leaders and active in land use and land cover change research
- Collaborations (e.g., book, article, research projects)
- April 3-7, 2011 (Portland, Oregon)
- <http://www.csis.msu.edu/NASA-MSU.htm>

# NASA-MSU Professional Enhancement Awards Program

- Started in 1998 (approximately 20 students/year)
- > 270 students from > 100 institutions around the world
- Many are now active leaders (e.g., Board members, committee chairs/members, local hosts/program chairs)

